



**GIANT**



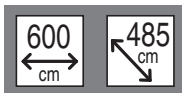
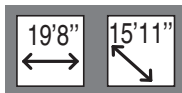
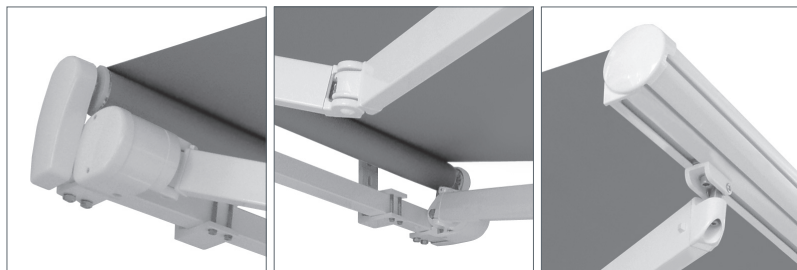
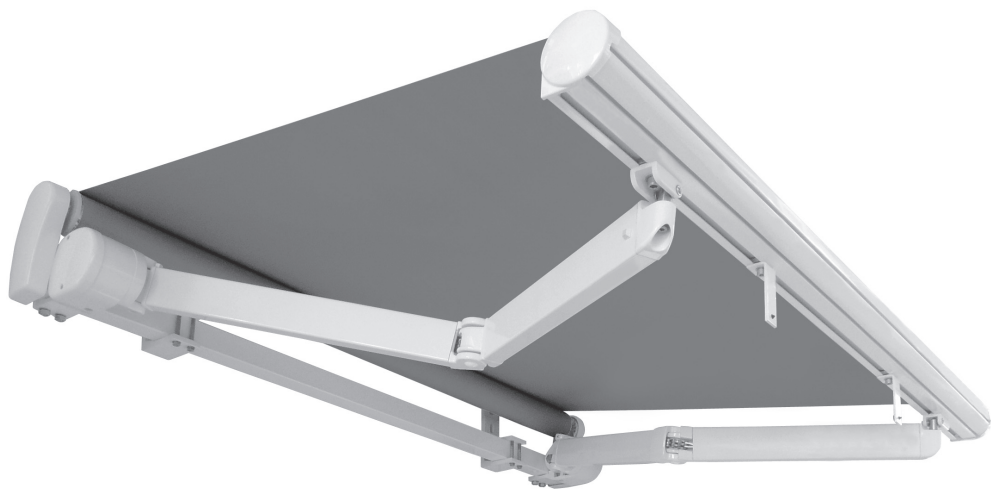
# GIANT

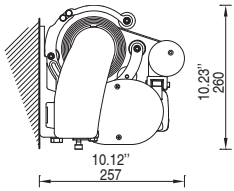
## FOLDING ARM AWNINGS

Toldo de brazos extensibles

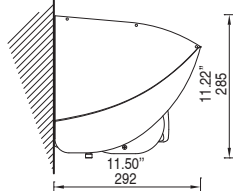
**EN** GIANT is a retractable awning on square steel bar 2". The aluminum brackets grants strength and compactness and the covers in painted aluminum gives it a great elegance. Volume and design make of this awning a perfect cover for public and private spaces. The awning gets a Spin arm created "ad hoc" with casted shoulder and elbow.

**ES** GIANT es un toldo de brazos extensibles sobre barra cuadrada de acero 50mm. Los soportes de aluminio extruido garantizan la resistencia y la solidez, y las tapas de aluminio lacado les dan elegancia y discreción. Solidez y diseño son las características que lo convierten en la solución ideal para coberturas de terrazas públicas y para proteger espacios y patios privados. Dispone de un brazo tipo spin, construido expresamente con accesorios forjados.

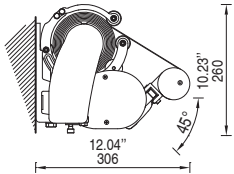




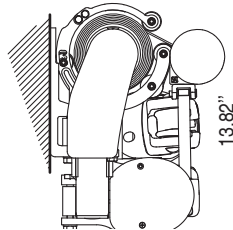
Wall installation  
Montaje a pared



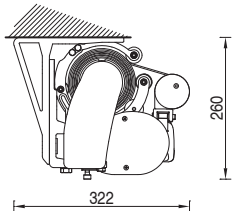
Installation with hood  
Montaje con tejadillo



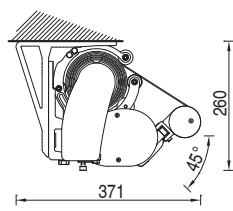
45° wall installation  
Montaje a pared 45°



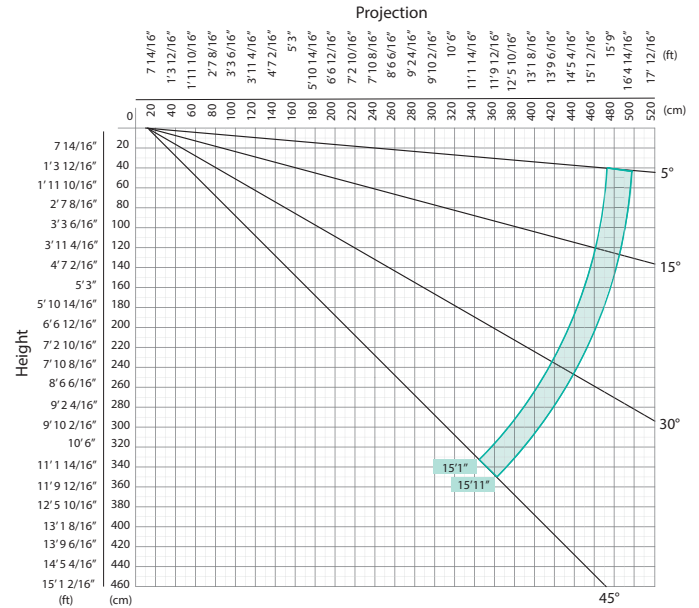
Crossed arms installation  
Instalación de brazos cruzados



Ceiling installation  
Montaje a techo



45° ceiling installation  
Montaje a techo 45°



Covering diagram - Wall/ceiling installation  
Diagrama de proyección - Montaje a pared/techo

(foot-inch / cm)	Minimum awning width Tamaño mínimo del toldo	
	15'1" 460	15'11" 485
	17'5" 530	18'2" 555
	9'11" 302	10'4" 315

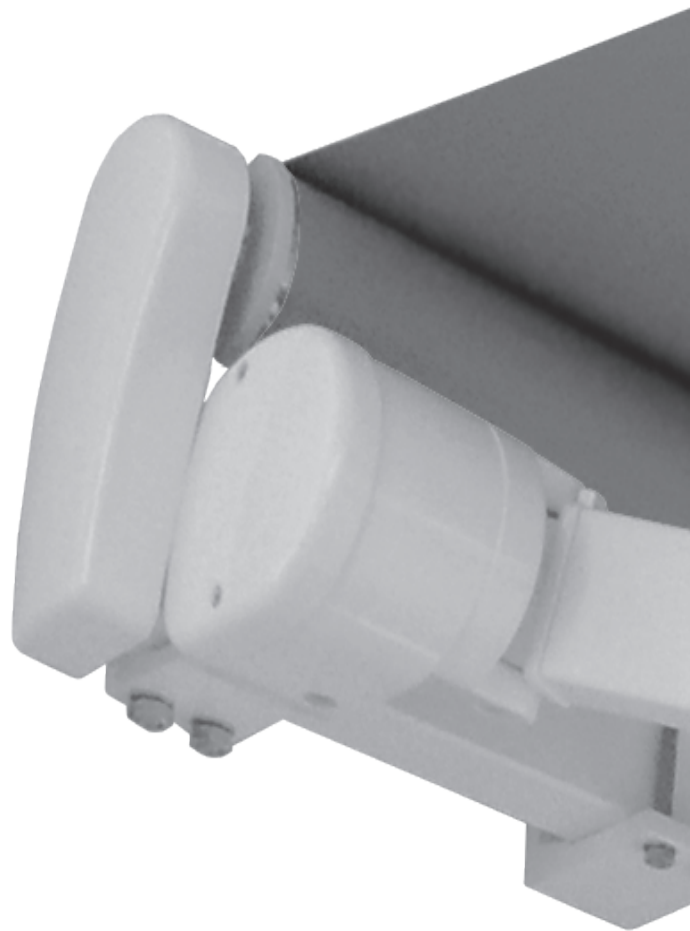
# FOLDING ARM

Brazos extensibles

## GIANT ARM

↙ min. 15'1"  
↘ max. 15'11"

Chain "Maxi"  
Cadena "Maxi"





BAT USA CORP. | [www.batusa.us](http://www.batusa.us)

