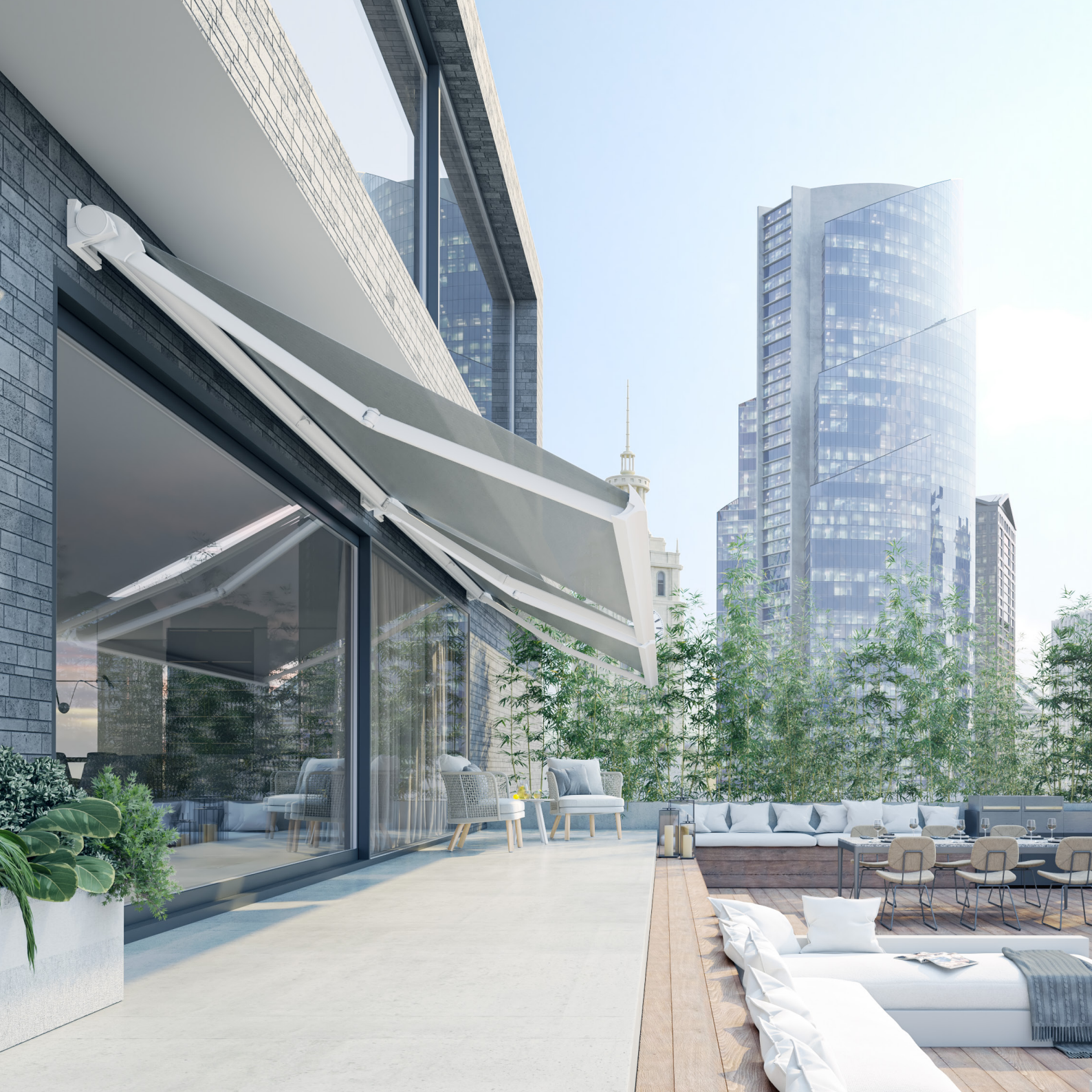




DOMEA



# DOMEA

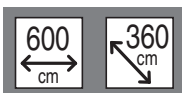
## TENDA A BRACCI CON CASSONETTO

Cassette folding arm awning

Store coffres

Hülsen und Kassettenmarkisen

Toldo a brazo con cofre



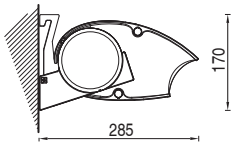
**IT** DOMEA, disegnata da Robby Cantarutti, designer di fama internazionale, è il primo prodotto della nuova “feel-experience” di BAT. Le sue forme accattivanti, che richiamano la tradizione e simboleggiano un connubio perfetto tra innovazione e classicità, forte di nuovi contenuti tecnologici, fanno di DOMEA uno dei prodotti di punta della gamma delle tende a cassonetto.

**EN** DOMEA, designed by Robby Cantarutti, internationally renowned designer, is the first Bat’s “feel experience” product. Its appealing shapes recall the tradition, symbolizing a perfect combination between innovation and classical, with many new technological features, which lead DOMEA to be one of the top products of the cassette model range.

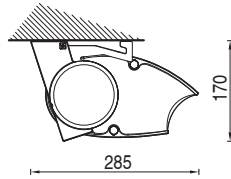
**FR** DOMEA, dessiné par Robby Cantarutti, designer de notoriété internationale, est le premier produit de la “feel-experience” de BAT. Ses formes attirantes, qui rappelle la tradition et symbolise l’union entre l’innovation et le classicisme. DOMEA intègre toutes les dernières technologies. DOMEA est un produit haut de gamme dans la ligne coffre.

**DE** DOMEA Gezeichnet von Herrn Robby Cantarutti, Designer mit internationalem Ruf. DOMEA ist das erste Produkt der neuen „feel-experience“ von BAT. Seine gewinnende Form, das an die Traditionen erinnert symbolisiert eine wirkliche Vereinigung zwischen Innovation und Klassizismus, stark in den neuen Technologien, machen DOMEA ein Punktprodukt der Kassettenmarkisen.

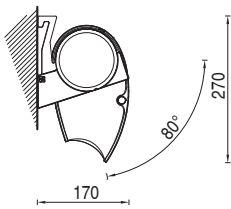
**ES** DOMEA, diseñado por Robby Cantarutti, diseñador de fama internacional, es el primer producto de la nueva “feel-experience” de BAT. Sus formas cautivadoras, que recuerdan la tradición y simbolizan la relación perfecta entre innovación y clasicismo, reforzado con nuevos contenidos tecnológicos, hacen de DOMEA uno de los productos punteros en la gama de los cofres de brazos extensibles.



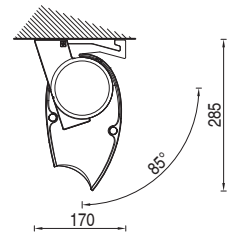
Installazione a parete  
Wall installation



Installazione a soffitto  
Ceiling installation



Installazione a parete 80°  
80° wall installation



Installazione a soffitto 85°  
85° ceiling installation

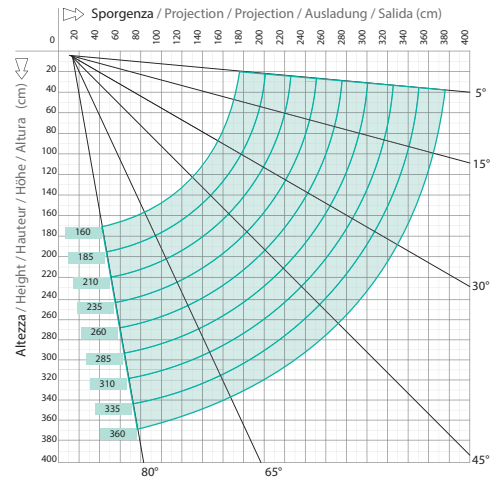


Diagramma di copertura - Installazione a parete  
Covering diagram - Wall installation

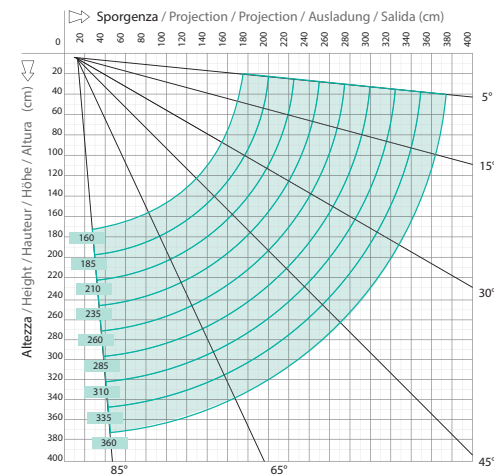


Diagramma di copertura - Installazione a soffitto  
Covering diagram - Ceiling installation

(cm)  
Ingombri minimi della tenda finita  
Minimum awning encumbrances  
Encombrents minimum du store fini  
Mindestabmessungen der Markise  
Tamaño mínimo del toldo

	160	185	210	235	260	285	310	335	360
	194	219	244	269	294	319	344	369	394
	197	222	247	272	297	322	347	372	397

## BRACCI ESTENSIBILI

Folding arm  
Bras extensibles  
Gelenkarm  
Brazos extensibles

## BALTEUS BALTEUS + LED

↙ min. 160 cm.  
↘ max. 360 cm.



## SPIN

↙ min. 160 cm.  
↘ max. 360 cm.



